

MONTHLY MEMBERSHIP PROGRESS REPORT

District 321B2

Results as of: 3/31/2020

GMT:

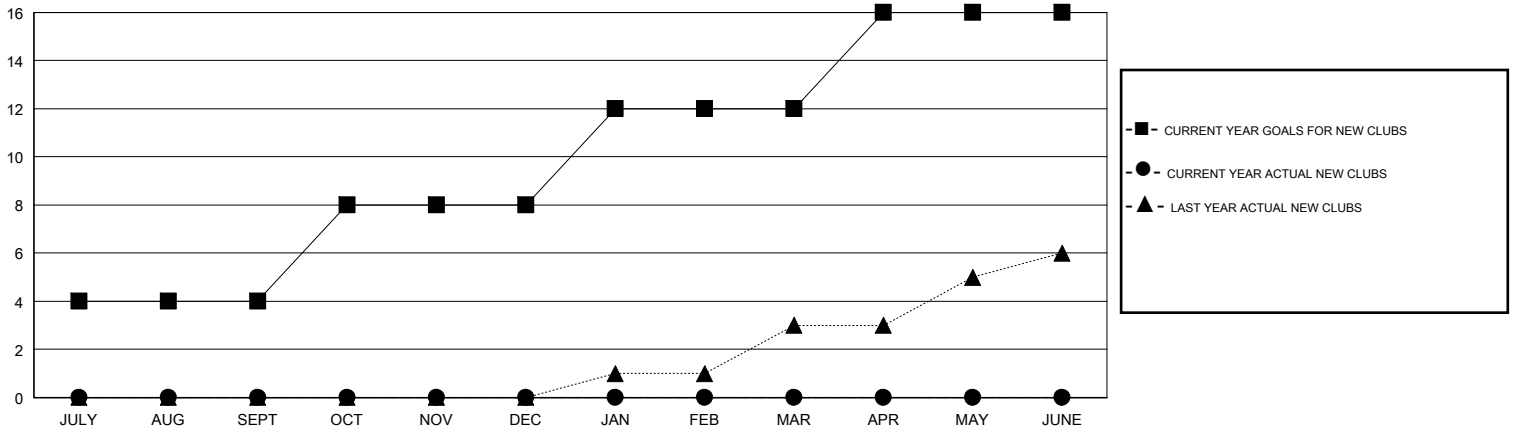
LOCATION INDIA

GMT CA

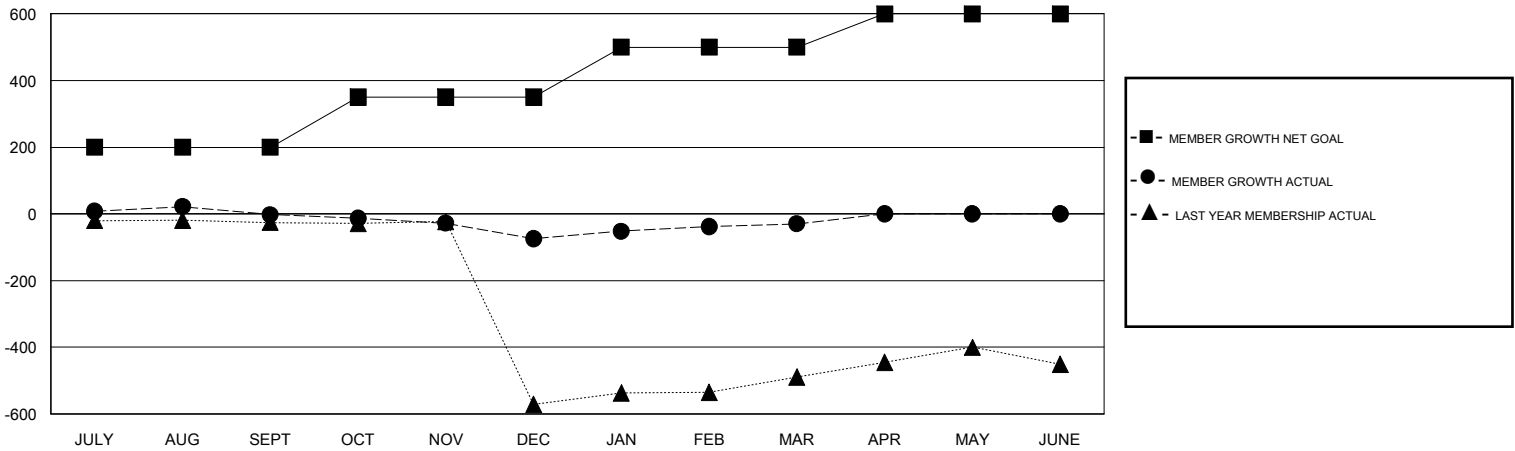
Clubs			
RESULTS FOR 2019-2020			
QUARTER	NEW CLUB GOAL	NEW CLUBS	DROPPED CLUBS
JULY/AUG/SEPT	4	0	0
OCT/NOV/DEC	4	0	3
JAN/FEB/MAR	4	0	0
APR/MAY/JUNE	4	0	0

Members			
RESULTS FOR 2019-2020			
QUARTER	MEMBER GROWTH NET GOAL	MEMBER GROWTH ACTUAL	DROPPED MEMBERS ACTUAL (including transfers)
JULY/AUG/SEPT	200	45	35
OCT/NOV/DEC	150	14	86
JAN/FEB/MAR	150	62	14
APR/MAY/JUNE	100	0	0

GOALS AND ACTUAL NEW CLUBS CUMULATIVE



GOALS AND ACTUAL MEMBERS CUMULATIVE



DROPPED CLUBS: 3	15 CLUBS OF 58 ADDED 1 OR MORE NEW MEMBERS	<u>GENDER DISTRIBUTION</u>
		MALE 1,145 (62.88%)
		FEMALE 676 (37.12%)
<u>DROPPED MEMBERS</u>	CLICK HERE FOR CUMULATIVE MEMBERSHIP DATA	TOTAL FAMILY UNIT MEMBERS 1,225
DECEASED 3		FAMILY MEMBERS PAYING HALF DUES 701
CLUB CANCELLED 49		
OTHER 83		
TOTAL 135		